

How to build V46-V47



FOR VOLVO CARS MANUFACTURING – HOW TO BUILD V46-V47

October 2023

Only when this packaging instruction is followed and with PacsOn International AB specified original articles, the unit is valid for load with 300 kg for overseas transport. If the load is higher, please contact Volvo Cars or PacsOn International AB for support. Units identified as not following this assembly instruction and found broken, will be subject for claim and parts damaged will consequently be charged back to the supplier.

- 1 Special pallet.
It is not possible to use standard pallets.



- 2 Turn the container around and put it on the pallet. The corners of the container will be fixed over pallet in all four corners.



- 3A **Mandatory!**
Push all four corners of the container, stick the corner lists through the holes.



How to build V46-V47

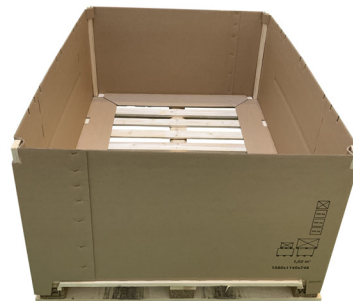


FOR VOLVO CARS MANUFACTURING – HOW TO BUILD V46-V47

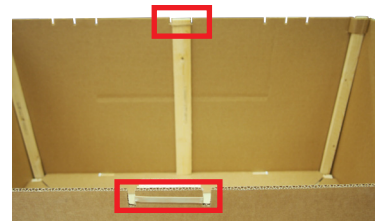
October 2023

Only when this packaging instruction is followed and with PacsOn International AB specified original articles, the unit is valid for load with 300 kg for overseas transport. If the load is higher, please contact Volvo Cars or PacsOn International AB for support. Units identified as not following this assembly instruction and found broken, will be subject for claim and parts damaged will consequently be charged back to the supplier.

- 3B The corner lists shall be standing at the corners of the pallet.

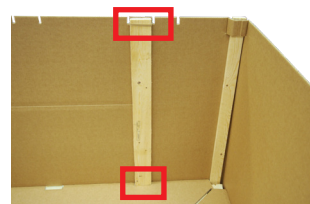
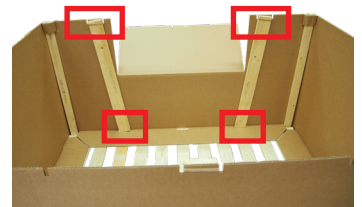


- 4 **Mandatory!**
If the side opening is not used, put one side support in the center hole on both sides of the container and lock it with the support holder rubber band. You need two support holder rubber bands and two side supports.



- 5 **Mandatory!**
If using the opening.

If the opening will be unsealed during packaging, put the side support to the side and lock it with the support holder. When closing the opening, move the side support to middle and secure the plank over the edge of the opening. You need four support holders rubber bands and four side supports.



How to build V46-V47



FOR VOLVO CARS MANUFACTURING – HOW TO BUILD V46-V47

October 2023

Only when this packaging instruction is followed and with PacsOn International AB specified original articles, the unit is valid for load with 300 kg for overseas transport. If the load is higher, please contact Volvo Cars or PacsOn International AB for support. Units identified as not following this assembly instruction and found broken, will be subject for claim and parts damaged will consequently be charged back to the supplier.

- 6 Put one side support in the middle hole at the center of the opening, there shall be 3 side supports at this side when the opening has been opened.



- 7 Turn the lid upside down, fold the edges and lock all four corners.



- 8 Mandatory!
Put the lid sheet, article number 2049408 into the lid and push it to lock.



How to build V46-V47

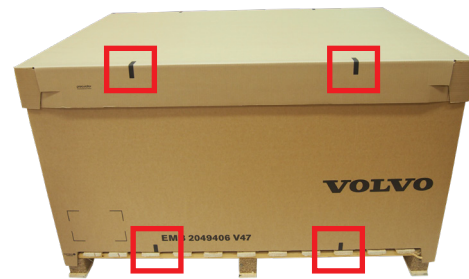


FOR VOLVO CARS MANUFACTURING – HOW TO BUILD V46-V47

October 2023

Only when this packaging instruction is followed and with PacsOn International AB specified original articles, the unit is valid for load with 300 kg for overseas transport. If the load is higher, please contact Volvo Cars or PacsOn International AB for support. Units identified as not following this assembly instruction and found broken, will be subject for claim and parts damaged will consequently be charged back to the supplier.

- 9 Put the lid over the container and strap it with two straps, use marks on the box as guideline.





How to build V46-V47

FOR VOLVO CARS MANUFACTURING – HOW TO BUILD V46-V47

October 2023

Only when this packaging instruction is followed and with PacsOn International AB specified original articles, the unit is valid for load with 300 kg for overseas transport. If the load is higher, please contact Volvo Cars or PacsOn International AB for support. Units identified as not following this assembly instruction and found broken, will be subject for claim and parts damaged will consequently be charged back to the supplier.

1 PCE 1 PCE 4 PCS 1 PCE 1 PCE 2 or 4 PCS 2 or 4 PCS

2049540 V46 2049405
V47 2049406 V46 6769099
V47 6769144 2049407 2049408 V46 6769155 6769376
V47 6769157

Observe! You must add one lid sheet 2049408 into lid 2049407.

Name	Art.No	Inside	Outside	MOQ
Wooden Pallet V4	2049540	-	1580x1140x132	13
Container V46	2049405	1554x1113x585	1567x1127x593	52
Container Cornerlist L3/ V-assort. size3	6769099	-	611x48x19	208
Container side support 3 Wood	6769155	-	589x75x19	208
Container V47	2049406	1554x1113x780	1567x1127x787	52
Container Cornerlist L4/ V-assort. size4	6769144	-	806x48x19	208
Container side support 4 Wood	6769157	-	784x75x19	208
Containerlid V4	2049407	1572x1128x150	1580x1140x154	208
Container Lid Sheet	2049408	-	1572x1128	208
Support holder Rubber band	6769376	-	-	220
Palletspacer cardboard V-8+V4+V5*	2041593	-	1111x762	208

*2 pcs of article 2041593 is required for a complete layer.



www.international.pacson.se/volvocars | customersupport.int@pacson.se